

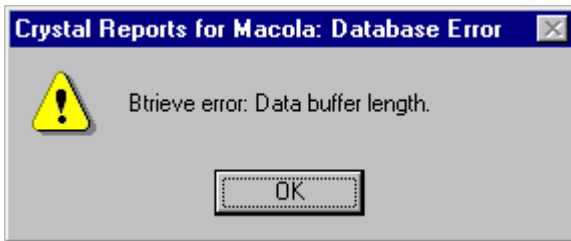
Upgrading Crystal Reports from Macola V6.0 to NSI V6.6/V6.7

Things you should know about Crystal Report Writer.

For Btrieve databases, every time a new report is saved with Crystal Report Writer, it remembers the location of the DDF files, the location of the Btrieve Data files and the layout of the Btrieve file structure that is being accessed by this report. By doing so, the report can be run quickly next time without the need to go back to the DDF files to find the field information. The result is faster performance. However, this also presents some issues with upgrading a Crystal report that was designed for V6.0 to V6.6/V6.7.

Since the V6.6/V6.7 file lengths have been changed from V6.0 (the date field has been expanded to accommodate the Year 2000), a new set of DDF files have been developed for V6.6/V6.7. Once you are done with the step of upgrading V6.0 to V6.6/V6.7, you should also copy the V6.6/V6.7 DDF files (they are on the diskette labeled "BTRIEVE DDF, IQ DDMASTER") to your Macola data directory. This is a step you need to do in order to support Crystal Report Writer. By default, Crystal Report Writer assumes the Btrieve data files reside in the same directory as the DDF files.

However, your V6.0 Crystal reports do not use the new file layouts in the new DDF files since it remembers the original V6.0 DDF file formats when it was first created. If you go ahead and run your V6.0 Crystal reports on your V6.6/V6.7 database, you may get the following error message:



You must take the following steps to make sure your V6.0 Crystal reports can be used for V6.6/V6.7. If your Macola V6.6/V6.7 resides in the same directory as your Macola V6.0, then please (1) Use the same directory for Macola V6.0 and V6.6/V6.7. However, if your Macola V6.6/V6.7 resides in a different directory from your Macola V6.0, then please (2) Use a different directory for Macola V6.0 and V6.6/V6.7.

(1) Use the same directory for Macola V6.0 and V6.6/V6.7.

By default, your Btrieve DDF files should be in the same directory as your data files. Therefore, you should copy the new V6.6/V6.7 DDF files to your \MACOLA\DATA directory once the upgrade is complete.

When you designed the V6.0 Crystal Report, it remembers the original V6.0 data file layouts and saves them in the report. You must perform a "Verify Database" option under the "Database" pull down menu to refresh the data layout in the report.

If you should get a CRW error message, simply click "Ignore" to proceed. If you perform "Verify Database" correctly, you should get a message similar to the following message box, please accept "Yes" to fix the report. After this is done, please save the report so it will remember the new data layout for V6.6/V6.7.



(2) Use a different directory for Macola V6.0 and V6.6/6.7.

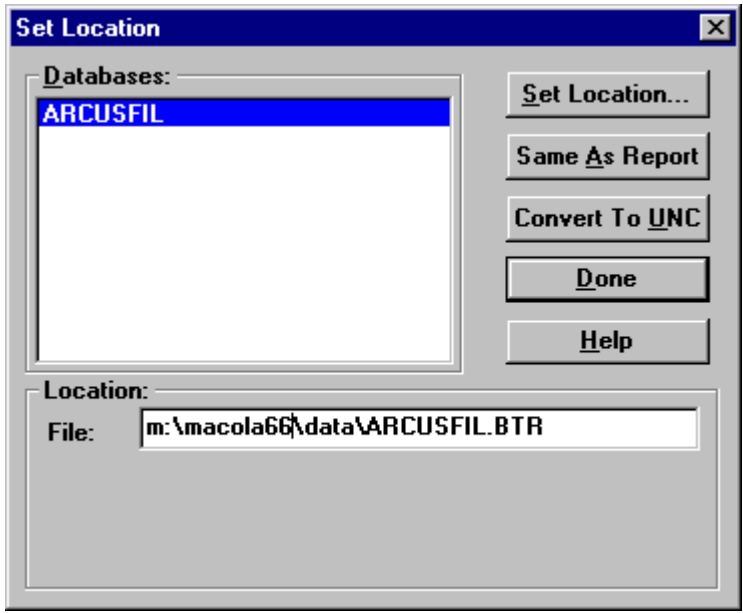
Let's take the following directory structure as an example:

- M:\MACOLA60\DATA - V6.0 Data directory
- M:\MACOLA66\DATA - V6.6 Data directory

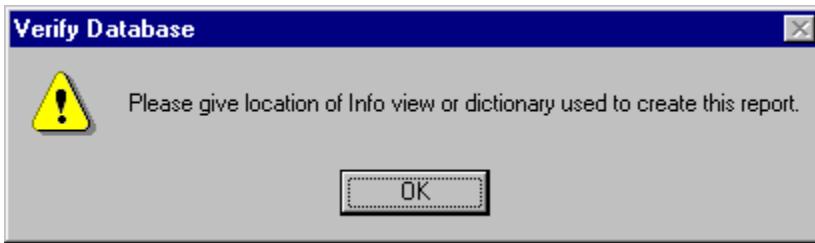
Please copy the V6.6/V6.7 Btrieve DDF files to your V6.6/V6.7 data directory (i.e. m:\macola66\data) since we have to put both DDF files and Btrieve data files in the same directory to make Crystal Report Writer work.

Please be aware that your original Crystal Reports that were designed in V6.0 remember the DDF files location as "m:\macola60\data" directory. However, you need to point to the new DDF files under the "m:\macola66\data directory" to access the V6.6 database. One of the ways to change the report DDF path is to delete or rename the DDF files in "m:\macola60\data". If Crystal Report Writer can't find the DDF files in the original directory when you perform "Verify Database", then it will prompt the user for the location of the DDF files. At this point, you will be able to change the DDF path to the "m:\macola66\data" directory.

Make sure the DDF files will be deleted or rename them in the "m:\macola60\data" directory. Then bring up your Crystal Reports that you designed in V6.0, choose "Set Location" under the "Database" pull down menu and you should see a screen similar to the following. Change your file location to the "m:\macola66\data" directory. If you have multiple files being accessed by this report, then you need to change all of them one by one:



After you are done with the “Set Location” option, choose “Verify Database” under the “Database” pull down menu. You will then get the following message:



Please click OK to proceed, then identify the new location for the Btrieve DDF files as “m:\macola66\data” to proceed. At the end, the system will give you another message like, “**The database file “ARCUSFIL” has been changed, proceed to fix up the report?**” Answer “Yes” to fix up the report, then choose “Save” to save the changes.

How to utilize V6.6/V6.7 date format in Crystal Report Writer.

Macola V6.0 utilizes a 6-digit numeric date in YYMMDD format. In V6.6/V6.7, to support the year 2000, we expanded the date field to 8-digit YYYYMMDD format. That is, 12/31/99 will be stored as 19991231 and 01/01/00 will be stored as 20000101.

If you simply lay out the date field on your V6.0 Crystal Report as a numeric field (i.e. printed like “971231” in the date column), then most likely they can be upgraded to V6.6/V6.7 without any problems. In most situations, Crystal Report Writer will print in V6.6/V6.7 like 19971231.

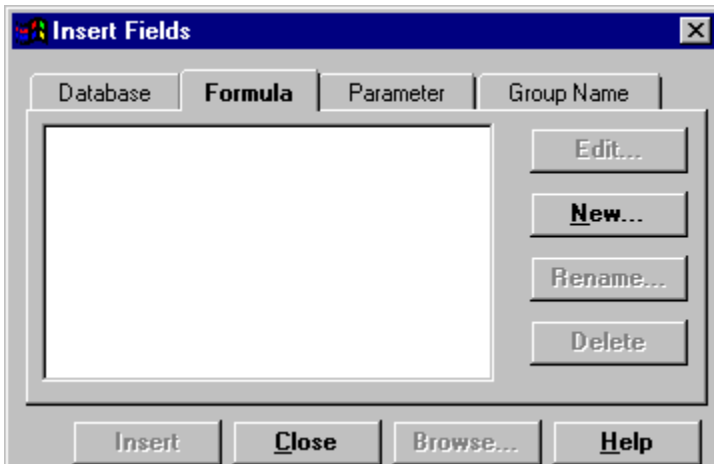
If you need to print the YYYYMMDD date as a Crystal Report Writer date field, you can utilize a special user defined function **NumberToDate**. This user defined function can be downloaded from NETcellent’s BBS at 909-595-6839 with the following 2 files:

U2LTDATE.ZIP NumberToDate for 32-bit Crystal Report Writer

UFLTDATE.ZIP NumberToDate for 16-bit Crystal Report Writer

You can also download the most current update from Seagate Software’s BBS at 604-681-9516.

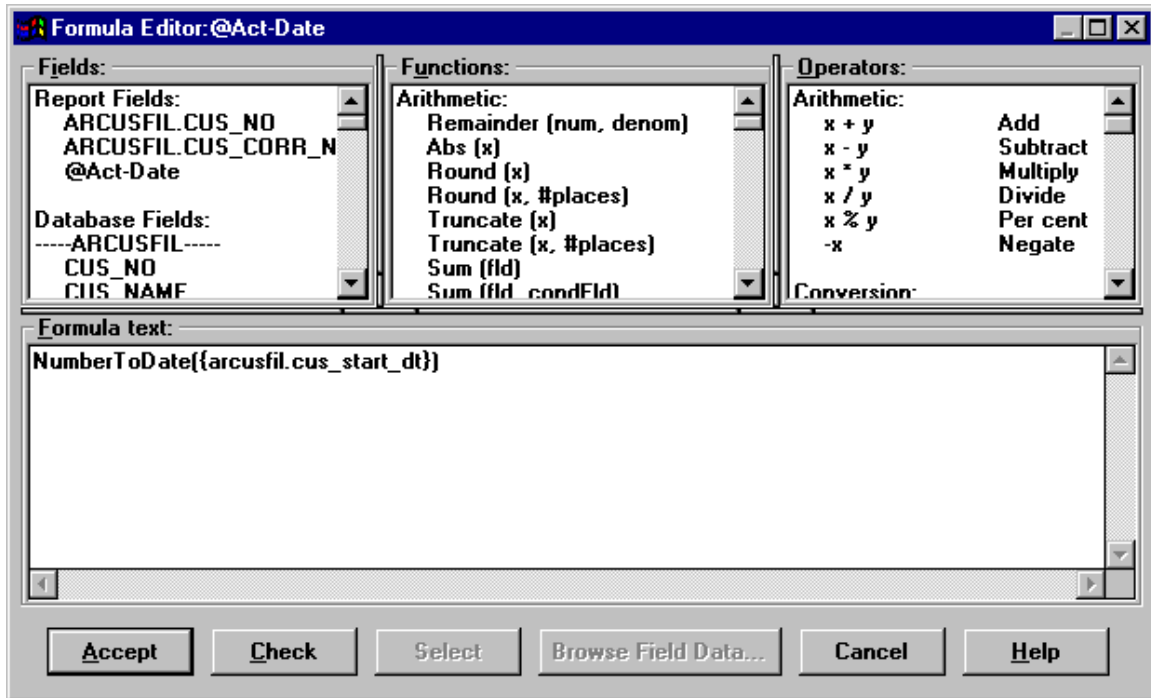
To utilize this function, choose “Formula Field” under the “Insert” pull down menu. You will get the following screen:



You should then choose “New” and enter a formula name. For example, enter formula name as “Act-Date” then click on the OK button. Then enter the following line at the formula window:

NumberToDate({arcusfil.cus_start_dt})

And click on the Accept button:



Highlight “Act-Date” and choose “Insert” to place this formula field on your report.

This NumberToDate function will work for both YYMMDD and YYYYMMDD date fields. If you were using this function in V6.0 already, then your report can be upgraded to V6.6/V6.7 without any problems.

If you are using any other special formula to convert the YYMMDD numeric field to Crystal date field, those formulas may not work with V6.6/V6.7. You will need to check how those special formulas work with V6.6/V6.7.